

Google Maps



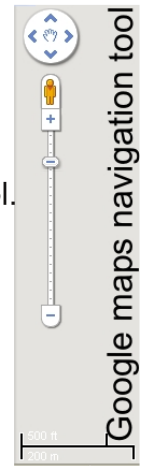
View maps and get directions.

Sensory Learning: Visual and Kinesthetic learner.

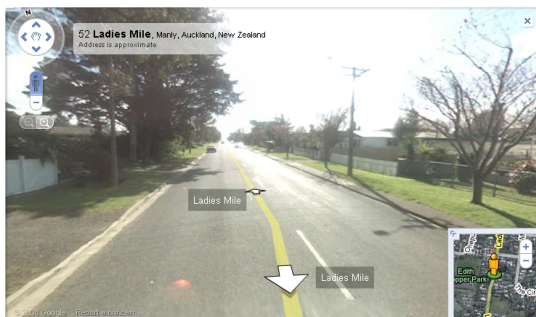
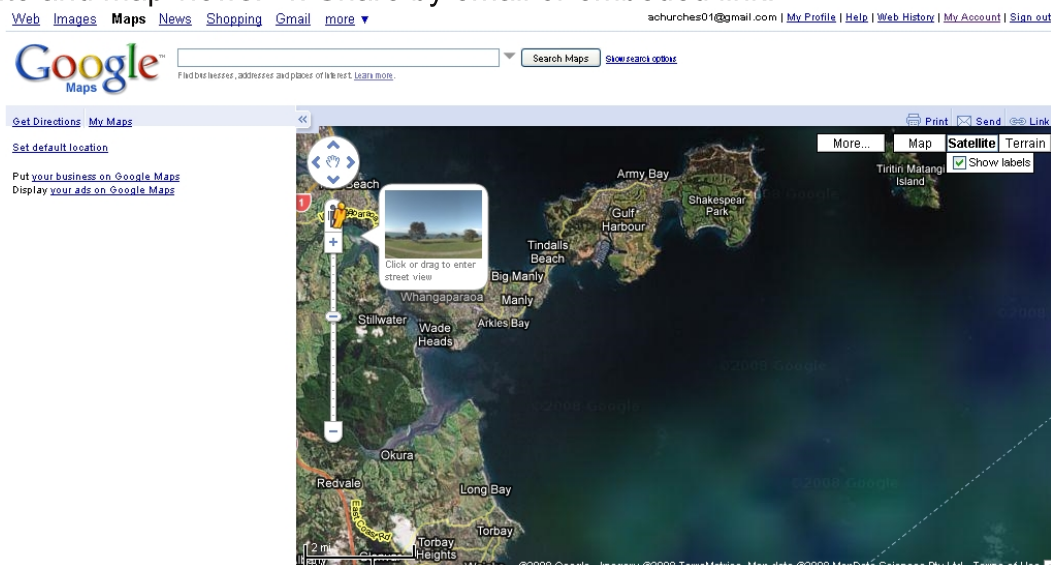
Bloom's Digital Taxonomy: Applying - carrying out, using, executing, running, operating, sharing, editing.

Starter Sheet - Tools for Teachers

Google maps combines street maps and satellite imagery in an exciting and captivating way. This is a free tool available without registration, though to get the best from it this is recommended. The tool allows you to toggle between map, satellite or hybrid views. You can zoom down into the map by double clicking on the image and navigate maps by mouse or using the navigation tool. A recent addition is the **streetview** feature. This street level viewer allows you to travel virtually down roads looking at a cleverly compiled compelation of stills images which give a 270° view of the location. This tool brings maps to life and enables virtual field trips.



Process: 1. Create an account (optional). 2. Enter location into search field. 3. Zoom and navigate using mouse or navigation tools, change views between satellite and map views. 4. Share by email or embeded link.



Streetview enables virtual field trips to over 8 countries. Navigate by clicking the arrows or using the mouse.

URL

<http://maps.google.com>

Alternatives:

Microsoft Live's Multimap is an online alternative to google maps available at <http://www.multimap.com>. (Free)

Google earth is a powerful consumer level GIS (Geographical Information System) tool that can be downloaded. Once installed, it connects to Google to provide an engaging learning experience. (Free)

Produced by Andrew Churches
All Rights Reserved 2008

Google Maps

In the Classroom



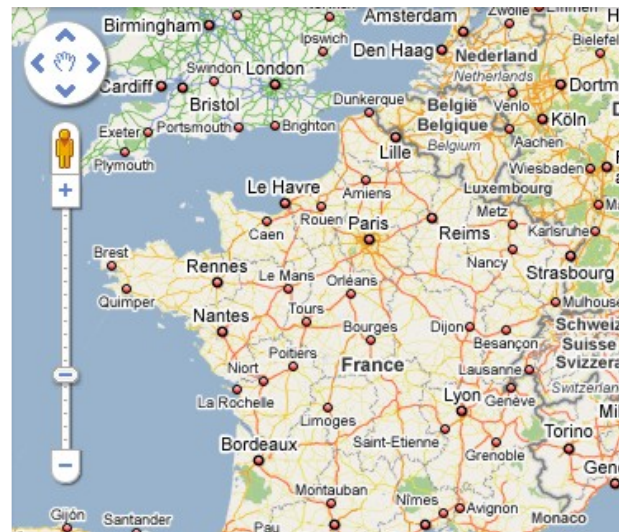
Streetview, which is Googlemaps visualisation tool, has captured street level images in seven different countries, including

- USA
- Australia
- France
- Italy
- Japan
- New Zealand
- Spain

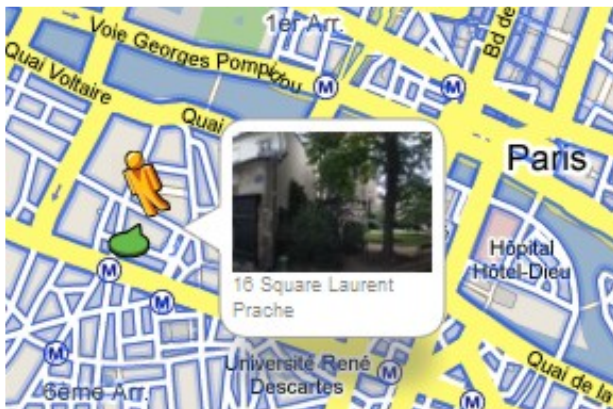
This present great opportunities for **Virtual Field Trips** for students of **Humanities and Languages**.

Visiting France

Key to learning a language, is developing an understanding of the culture of the country.



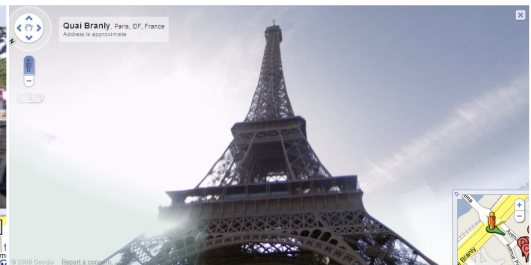
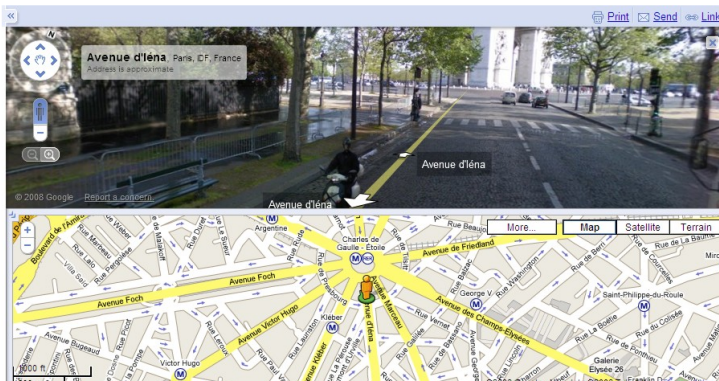
Google Maps view of France. Double clicking on the map will zoom in. Note the **street view tool** available as the yellow person in the navigation tool.



Selecting Google Maps and zooming in on Paris will allow you to find street names as zoom in. Clicking on the **streetview "person"** will enable **street level images**. You can then navigate around the map by **dragging and dropping** the "person" on the location you want. You will get a small **preview window** showing you the view at the location (See Left).

Areas mapped with streetview appear with a blue highlight.

Use **Google maps** and **Streetview** to visit the Eiffel Tower or the Arc de Triumph; to walk the Avenue des Champ-Elysees or stroll the banks of the River Seine.



Streetview allows you a **270° range of view**. Here looking up from the base of the Eiffel Tower.

Split screen view of **Google maps** and **Streetview**. Looking down the Avenue d'Iéna towards the Arc de Triumph.